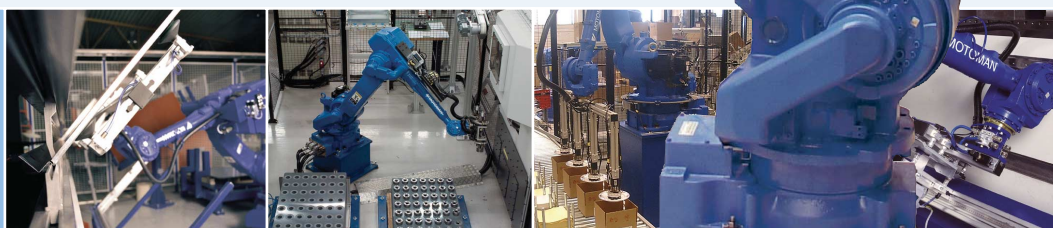
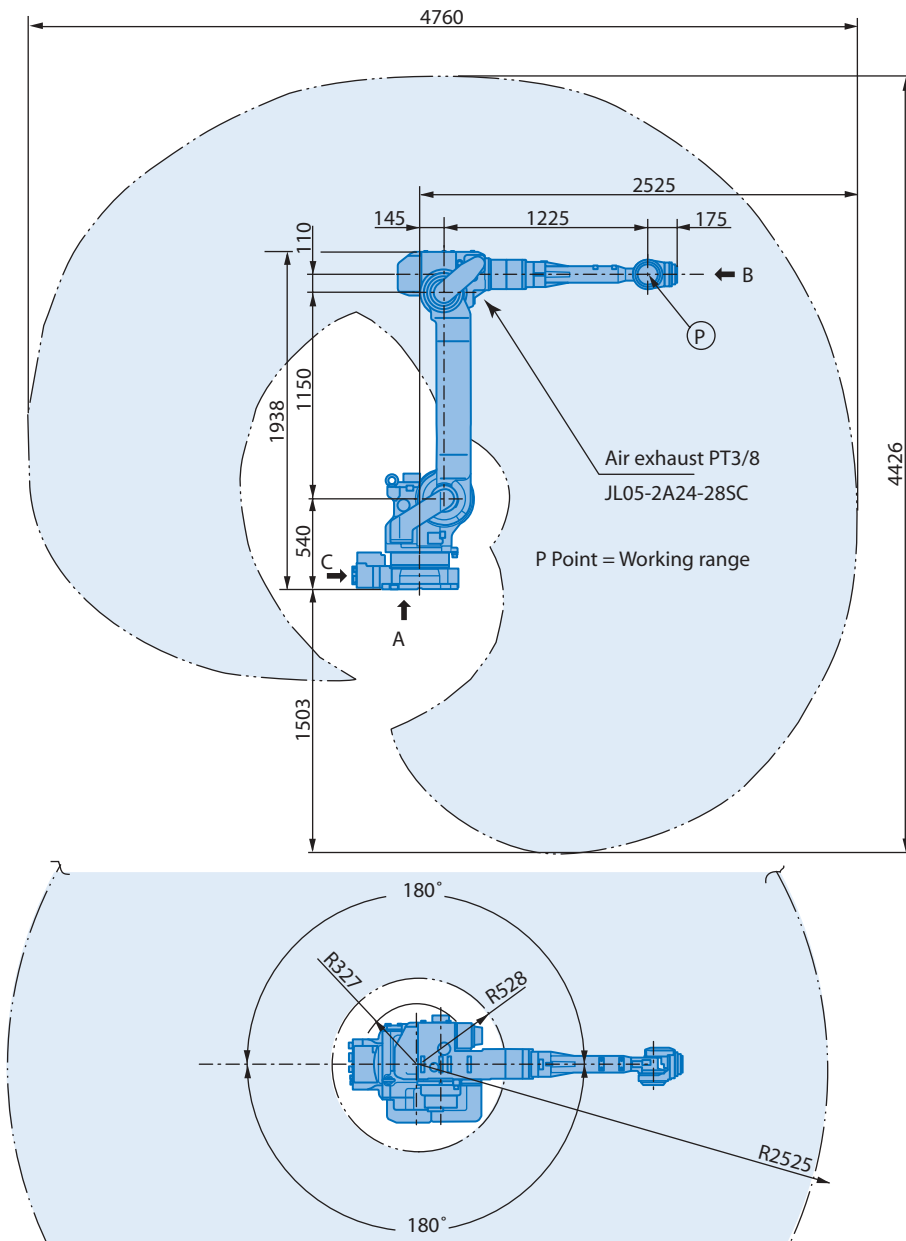


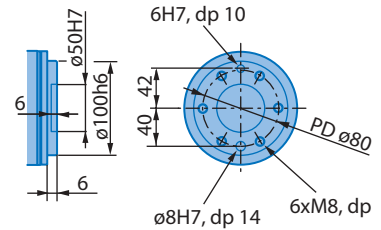
General purpose robot
MOTOMAN-UP50N-35



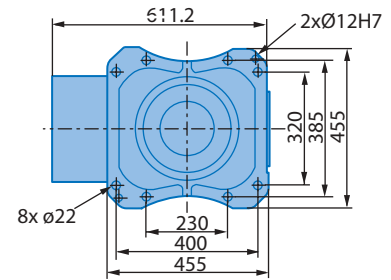
 MOTOMAN®



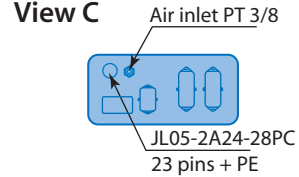
View A



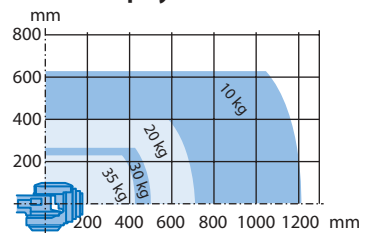
View B



View C



Maximum payload



Note

These dimensions are for reference only. Please request detail drawings for all design or engineering requirements.

Technical Specification for MOTOMAN-UP50N-35

Controlled axis	6					
Payload	35 kg					
Repeatability	±0.07 mm	Axis	Motion range	Maximum speed	Allowable moment	Allowable inertia
Weight	570 kg	S	±180°	140°/s	-	-
Power requirements	5.0 kVA	L	+135°, -90°	140°/s	-	-
Mounting positions	Floor, wall ¹⁾ and ceiling	U	+296°, -160°	140°/s	-	-
Wrist unit protection class	IP67	R	±360°	250°/s	147 Nm	10 kg·m ²
Robot body protection class	IP54 ²⁾ , (IP65 option)	B	±125°	250°/s	147 Nm	10 kg·m ²
Ambient conditions	0 to +45°C, 20-80% RH	T	±360°	350°/s	78 Nm	4 kg·m ²

¹⁾ S-axis limitations
²⁾ Floor mounted

Technical data may be subject to change without previous notice · Motoman Robotics Europe AB 2005 · Reg. No. MRS6226GB.0.L



European Headquarters
Motoman Robotics Europe AB
Box 4004, SE-390 04 Kalmar, SWEDEN
Phone +46 (0)480 417 800
Fax 046 (0)480 417 999
www.motoman.se

Production unit
Motoman Robotics Europe AB
Box 504, SE-385 25 Torsås, SWEDEN
Phone: +46 (0)480-417 800
Fax: +46-(0)486-414 10

